

FALL 2018

VOLUME 16 • NUMBER 2



TOWER TIMES



5. *The Marygrove Campus:  
The Site of Exciting News*

6. *Marygrove Momentum Scholarship*

7. *31st Contemporary American  
Author: Elizabeth Acevedo*

8. *Meet the 2018  
Distinguished Alumni*

MARYGROVE  
COLLEGE

GRADUATE STUDIES & PROFESSIONAL DEVELOPMENT





# Message from the President

To my fellow alumni and friends of Marygrove:



President  
**Elizabeth A. Burns '72,**  
**MD, MA**

As the saying goes, "There's never a dull moment." And Marygrove is anything but dull! Since our last *Tower Times*, Marygrove has moved swiftly and firmly into our new role as a graduate-only college. But that decision caused our accreditors, the Higher Learning Commission, some concern. They'd never before dealt with one of their colleges that took so bold a move. They presented Marygrove with a Show-Cause Order, effective September 27th of last year. It held until this July 9th when we received the grand news that Marygrove continues to be fully accredited, meaning no restrictions and no probation! The faculty and staff deserve every accolade for their teamwork, diligence and creativity in responding to HLC's every question and allaying every concern. The implications of this accreditation are significant. It's important for current and future students to know that their college is accredited. Marygrove goes forward with renewed confidence in our team, our product and our future.

In the last edition of *Tower Times*, you read about the Marygrove Conservancy, its purpose and its mission. Even before the formation of the Marygrove Conservancy, Marygrove and the IHM Sisters were in discussion about the future of this campus. Thanks to The Kresge Foundation and the participation and dedication of several other partner organizations, the Marygrove campus will become the site of a new cradle-to-career educational partnership including a state-of-the-art early childhood education center, a new K-12 school and the introduction of innovative teacher education training modeled after hospital residency programs. A press conference took place on the steps of the Liberal Arts Building on September 13th to make this exciting public announcement. There will be much more information in this edition so I hope you'll read on.

The very next day, September 14th, our 2018 Alumni Reunion weekend kicked off with the 16th annual Distinguished Alumni Awards ceremony. You'll have the chance to read about these alumnae's different yet amazing paths to this award. We celebrated the induction of the Class of 1968 into the 50-Year Club on Saturday, September 15th. It was a great day. Please plan to join the Class of 1969 and all the classes whose graduation year ends in 9 and 4 at next year's Alumni Reunion weekend, September 13th and 14th.

Just as exciting, Marygrove has added some new graduate certificates and leading-edge micro-credentials to our academic offerings, for which we're awaiting the Department of Education approval. We've also added a STEM (grades 3 to 5) concentration to the Master in the Art of Teaching, helping to prepare teachers to teach science using the Next Generation Science Standards. You'll learn more about these great programs on Page 12.

And on April 26th, please come to hear the unique and compelling slam poet Elizabeth Acevedo as our 31st Contemporary American Authors Series lecturer.

To the alumni and friends who have continued to provide our Marygrove with both financial and moral support, thank you. We still need them both. Every dollar goes to keep our college running smoothly and efficiently and ever-focused on our mission of education!

I'd like to close on a personal note. I'm in my fourth academic year at Marygrove, and it is time to "graduate" again. The journey has had many ups and downs and more curves in the road than I thought possible. However, the transition has progressed and it is time to focus and grow as a graduate college. The time is right to search for new leadership. As an alumna, former Trustee and administrator, I'll always be involved in and supportive of Marygrove. I'll stay on until the next president is chosen and look forward to hearing from you. I'll be forever grateful for your support, for many of you were also key in the transition's success.

Sincerely,

# Contents

|   |   |  |    |
|---|---|--|----|
| Message from the President .....                          | 2 | Meet the 2018 Distinguished Alumni.....    | 8  |
| News from Alumni Association President.....               | 3 | Alumni Profile: Meet Alberta Elder .....   | 10 |
| In Memoriam.....  | 4 | Ballroom Dancing Returns .....             | 11 |
| The Marygrove Campus: The Site of Exciting News .....     | 5 | New Academic Programs.....                 | 12 |
| Marygrove Momentum Scholarship, IMD .....                 | 6 | Donor Recognition: Thank You So Much ..... | 13 |
| Elizabeth Acevedo: 31st Contemporary American Author..... | 7 | Got News?.....                             | 20 |

## NEWS FROM THE ALUMNI ASSOCIATION PRESIDENT

With the change of the seasons reflected in the beautiful fall colors we see all over campus, I'm pleased to announce some changes that have occurred in your Alumni Association. The kinds of support Marygrove needs from the Alumni Association -- and all of us as alumni -- have changed since we became a graduate-only institution. Make no mistake, our college still needs our financial support as ever and it needs all of us who have gotten an outstanding education to give back. But the type of help the Alumni Association members can give Marygrove includes something else.

We want more students to benefit from a Marygrove education. So if you know someone looking for a Master's degree in Education, Human Resource Management or Social Justice, be sure to tell them about Marygrove. Marygrove is offering SCHOLARSHIPS, which, as you well know, are unusual to come by on the graduate level. Please read about The Marygrove Momentum Scholarship on Page 6 so you can pass on this information.

In light of the changes at Marygrove, the board looked at the Association bylaws and the College's new mission and, effective August 9, 2018:

- Created a Communications Committee to focus on new methods of communication with alumni, social media, electronic email newsletters, blog posts, etc., working in conjunction with the director of communications and marketing
- Maintained the Program and Affinity Committees, which develops and implements programs designed to engage the alumni population and in cultivating donor relationships, coordinating fundraising efforts for the Alumni Association, assist with college-wide fundraising initiatives, recognize alumni accomplishments and significant life events and develop innovative strategies to bond alumni with the College, respectively.

There is much exciting news in this fall edition of *Tower Times* of which you can be very proud. New academic programs. New cradle-to-career development on campus. This year's Distinguished Alumni Award winners. And much more.

As always, we ask for your support, input and participation in the Alumni Association. Please contact Dennis Howie, vice president for Institutional Advancement, at (313) 927-1451 or [dhowie@marygrove.edu](mailto:dhowie@marygrove.edu) on ways we can be relevant to you and you can help our college move forward.



*Alumni Association President*  
**Vanessa Howell Gbant,**  
**MA '92, D.Min**

## MARYGROVE COLLEGE ALUMNI ASSOCIATION BOARD OF DIRECTORS

**Dr. Vanessa Howell Gbant '92**  
 PRESIDENT

**Elizabeth Poliuto Loria '70**  
 VICE PRESIDENT

**Samual Blue III '93**  
 TREASURER

**Alisa Ferguson '02**  
 SECRETARY

### MEMBERS AT LARGE

**Mark Bartnik '79**

**Gloria Brown-Banks '11**

**Rahjinh Johnson '03, '05**

**Margo R. Lee '00**

**Brigeda Nelson '85**

**Miranda Linzmaier Outlaw '14**

**Frances L. Brown Simmons '85**

### *Tower Times*

is produced for alumni and friends of Marygrove College through the Division of Institutional Advancement. Address changes, duplicate copies or information requests should be directed to:

Division of Institutional Advancement  
 MARYGROVE COLLEGE  
 8425 West McNichols Road  
 Detroit, MI 48221-2599  
 Phone: (313) 927-1451  
 Fax: (313) 927-1345  
 E-mail: [dhowie@marygrove.edu](mailto:dhowie@marygrove.edu)  
 Website: [alumni.marygrove.edu](http://alumni.marygrove.edu)



# In Memoriam



- |                                 |                              |
|---------------------------------|------------------------------|
| Hilda Hayes Caterina '44        | Dolores McMillan Duda '58    |
| Mary Henze Bourget '44          | Cheryl Byers '58             |
| Dorothea Mulholland Madigan '46 | Sylvia Mutter Wallace '59    |
| Mary H. Douglas '48             | Noreen Foley '59             |
| Genevieve Lombard Burns '48     | Rose Mary Ala, IHM '60       |
| Mary Jean Baker Hayes '49       | Mary Jane Hinks, IHM '66     |
| Anna Napolitan Johnson '49      | Mary Sihler '70              |
| Marie Baumann Richards '49      | M. Ronald Held, OSF '72      |
| Margaret Sullivan, IHM '49      | Rita Turek, CSB '73          |
| Elaine Lohmann Koerber '51      | Eleanora DeNike Hallberg '79 |
| Patricia Zuch Truskowski '51    | Stefanie Ott O'Toole '89     |
| Elsa Aicheler Smith '51         | Cecil Summerville '91        |
| Mary Corrigan Richart '52       | Patricia Sanford '00         |
| Florence Moroun McBrien '52     | Aileen Wheaton '01           |
| Nila Neill, IHM '52             | Barbara DeWitt '03           |
| Nettie McDaniel Rickerman '53   | Denise Risbeck '06           |
| Mollilu Sonnenburg Lashmet '53  |                              |
| Elizabeth Warner Haller '53     |                              |
| Carolyn Steffey Tresnan '55     |                              |
| Suzanne Eichhorn, OP '55        |                              |
| Jane Roberts Papranec '56       |                              |
| Sheila Keeler DeBono '57        |                              |
| Mary Ullrich Hoban '57          |                              |



**BROTHER OF:**

Melanie Stachura Snyder-Lindblom '72

**HUSBAND OF:**

Mary Jane Johnston Hirschert '68

## THE MARYGROVE CAMPUS:

# *The Site of Exciting News*

On September 13th, seven organizations gathered on the Marygrove College campus to announce a new cradle-to-career educational partnership including a state-of-the-art early childhood education center, a new K-12 school and the introduction of an innovative teacher education training program modeled after hospital residency programs. Attended by 100 media, community, business and thought leaders, this announcement preserves the Marygrove campus as a site for education.

The P-20 Partnership – one of the first in the nation – is backed with a \$50 million commitment from The Kresge Foundation, marking the largest philanthropic investment in history into a Detroit neighborhood. The investment places education at the center of community revitalization efforts in the Livernois-McNichols district in northwest Detroit.

In her remarks, President Dr. Elizabeth Burns spoke of the college's role with the P-20 Partnership. She recalled, "Our Board has had to make some very difficult decisions in the past several years, particularly last year with the closing of undergraduate programming. But they always remained committed to the city of Detroit, to the P-20 vision and to the importance of public education. Their vision of restoring Marygrove's campus to a vibrant place, full of life, and contributing to the city, was fundamental to their thinking and to their decision to actively pursue possibilities for this campus.

"Our innovative – and much-needed -- graduate programs, include Elementary/Early Childhood Education, Reading and Literacy, Special Education with its concentration in Autism Spectrum Disorder; Educational Technology; Educational Leadership; for those career-changers who want to become teachers, a Master's of Education with Teacher Certification; and our Master in the Art of Teaching, which just added a STEM concentration for grades 3 to 5 teachers.

"We are restarting our Griot program that supports African American men in their teacher certification studies."

The concept has captured the imagination of many in and around the city of Detroit. Marygrove has received dozens of inquiries about the specifics, wanting to enroll their children or grandchildren, or wanting to be part of this exciting development.

At the press conference, Detroit Mayor Duggan, who served on the Marygrove Board of Trustees in the 1980s, said that he did it because he was inspired by the mission. It was a place where non-traditional students looking to get back into school could find a supportive environment. He lauded the IHM sisters and the Marygrove leadership for their courage in deciding to continue as a graduate-only college and not to leave this campus. Mayor Duggan said, "This is a site of education and this is going to continue to be a high quality education site. Congratulations. We're going to continue to be very proud of the education that goes on on the Marygrove campus."

The full text of Dr. Burns' comments can be found at [www.marygrove.edu/](http://www.marygrove.edu/). For the full press announcement, please visit the Campus News section on the Marygrove website. And for a short video that gives you an idea of the breadth of this commitment, please type the link below into your browser. <https://www.youtube.com/watch?v=ERXqnZl8cVA&feature=youtu.be>

“We are restarting our Griot program that supports African American men in their teacher certification studies.”

### THE QUICK FACTS:

- \$50 million commitment from Kresge puts education at the center of community revitalization efforts in the Livernois-McNichols district; largest-ever philanthropic investment into a single Detroit neighborhood.
- P-20 campus at Marygrove brings together exemplary early childhood, pre-K-12, post-secondary and graduate education in "cradle-to-career" continuum. One of few programs in the nation.
- Partnership to serve roughly 1,000 Detroit children at full capacity in 2029; ninth grade begins 2019, kindergarten and pre-K in 2020.
- New DPSCD K-12 program is in collaboration with the U-M School of Education; innovative approach to preparing newly certified teachers modeled on residency for medical doctors.
- New early childhood center to be built on campus, to open 2020 (also to house kindergarten).
- Starfish, DPSCD and the U-M SOE will co-design the early childhood education curriculum, catered to the whole child and family servicing to children ages birth through 5.
- Former Immaculata High School/Bates Academy and portions of Liberal Arts Building to be renovated for student and faculty use.
- Early childhood center to use "hub and spoke" model to support existing early childhood facilities in area.
- P-20 partnership builds on 90-year legacy of Marygrove College.



# MARYGROVE MAKES UNUSUAL MOVE TO OFFER SCHOLARSHIPS TO GRAD STUDENTS

Marygrove is pleased to announce the new Marygrove Momentum Scholarship, provided by an anonymous donor that is committed to enriching the lives and careers of eligible new students at the college. This one-time only, limited scholarship program will assist new students of all our Master's degree and certificate programs beginning in January 2019.

If you know anything about grad school, you know that scholarships are hard to come by. With the Marygrove Momentum Scholarship, students can receive between 50 and 70% off the estimated cost of tuition for up to 9 credit hours for the Winter '19 and Summer '19 semesters.

What a great opportunity for Marygrove alumni to get their graduate degree at their alma mater! What a great opportunity for the family and friends of Marygrove alumni to advance in their career and their life!

A Marygrove education is affordable and fully accredited. Most of our programs are also conveniently online.

Who you gonna call for more information? Marygrove Admissions at (313) 927-1240. Or write to [info@marygrove.edu](mailto:info@marygrove.edu).



*Winter 2019*  
**IMD**  
INSTITUTE OF  
MUSIC & DANCE

**CLASSES START JANUARY • STILL TIME TO REGISTER**

Register online at: [webadvisor.marygrove.edu](http://webadvisor.marygrove.edu)



## 31ST ANNUAL BAUDER CONTEMPORARY AMERICAN AUTHORS LECTURE



FEATURING

# Elizabeth Acevedo

Marygrove College is proud to be entering the fourth decade of the Contemporary American Authors Lecture Series. From the great Gloria Naylor in 1989 to Pulitzer Prize-winning Colson Whitehead in 2018, Marygrove has brought significant African American authors to the attention of thousands in the Metro Detroit community.

Marygrove is thrilled to introduce Detroiters to the work of Elizabeth Acevedo as our 31st Contemporary American Author. This is a most exciting way to enter a new decade of this signature event in the city of Detroit. Ms. Acevedo is one of today's most talked-about slam and spoken word poets because her work is edgy and thought-provoking.

Ms. Acevedo is the author of the novel *THE POET X*, which won the 2018 Boston Globe-Horn Book Award for fiction and of *Beastgirl & Other Creation Myths*, a collection of folkloric poems centered on the experiences of a first-generation American woman. She holds a Bachelor of Arts degree in Performing Arts from The George Washington University and a Master of Fine Arts degree in Creative Writing from the University of Maryland. She has appeared nationally and internationally at venues such as The Lincoln Center, Madison Square Garden, the Kennedy Center of the Performing Arts, South Africa's State Theatre, The Bozar in Brussels, and the National Library of Kosovo.

She is a National Slam Champion and her poems have been published or are forthcoming in *Poetry*, *Puerto Del Sol*, *Callaloo*, *The Notre Dame Review*, and others. Acevedo is a Cave Canem Fellow, Cantomundo Fellow, and participant in the Callaloo Writer's Workshop. Slam poetry is a genre in which poets recite original poetry, combining elements of theater, storytelling and other kinds of performance. Ms. Acevedo is the first spoken word artist and slam poet in the Contemporary American Authors Lecture Series.

**Put Friday, April 26, 2019, in ink on your calendar! Bring friends.**

This series at Marygrove College is an annual event bringing a nationally-known author to our campus for a public lecture and seminar with students. It began when the late Frederick P. Currier, a former Marygrove College trustee, attended a reception on campus and remarked that he would like to bring a national writer to Marygrove for a weekend. Mr. Currier's start-up check soon followed his suggestion, and in 1989 nearly 600 guests of the College heard Gloria Naylor inaugurate the series.

Since then, through the generous support of corporate donors, foundations, advertisers, friends, alumni, the Marygrove College Board of Trustees, and the Lillian and Donald Bauder Endowment, we have been able to keep the Series free and accessible to the entire metropolitan Detroit community. To date, nearly 8,500 people have joined us at the Friday night public reading to hear outstanding writers share their work. The Friday evening reading/lecture is followed by a reception and book signing.



**FRIDAY, APRIL 26, 2019 • 8 P.M.**

# Meet the 2018 Distinguished Alumni Award Winners

The Marygrove College Distinguished Alumni is one of the highest honors that can be awarded to graduates by Marygrove College and the Marygrove College Alumni Association. On Friday, September 14, we celebrated the lives of four extraordinary alumnae at the 2018 Distinguished Alumni Ceremony. For those of you who missed the celebration, please allow us to introduce this year's honorees.

## **SR. KATHRYN THERESE PIERCE, IHM '59**

Sr. Kathryn T. Pierce—or Sr. Kate, as many of us know her—grew up in Emmett, Michigan, a humble agricultural village whose population, try as it might, never quite surpassed 600 residents. “I knew there was much more to the world than what I was seeing and experiencing on that farm,” she says. “[Life in Emmett] was probably one of the reasons I joined the congregation.”



This appetite for adventure, along with a longing to see the world and “help those who were less fortunate than [her],” flourished under the guidance of her teachers, the IHM Sisters, and Sr. Kate joined the IHM community in 1954.

After earning her BA in history from Marygrove College in 1959, Sr. Kate taught for three years at St. Bede in Southfield, Michigan, before accepting an assignment to teach in the interior of Puerto Rico. At only 28 years old, Sr. Kate accepted a new position as superior and principal of San Joaquin, a K-12 Catholic school in Adjuntas.

Following this, she received a full scholarship with salary to complete her MA degree in cultural education through New York University. After completing her degree, she returned to a large public high school in Caguas, Puerto Rico, and helped establish an Adolescent Clinic that provided language and cultural “reintegration” training for high school students fleeing the drugs and crime that had overtaken their communities on the mainland.

In 1976, Sr. Kate was elected to the leadership team of the newly established Vice-Province of Foreign Missions for the IHM Sisters. The Maryknoll Mission Society hired her in 1979 to help build their newly established Mission Center. For the next 27 years, Sr. Kate worked at the center, leading countless discernment and cultural integration programs for missionaries, initiating re-entry programs for missionaries returning to their homeland as well as orientation workshops for international ministers coming to work within the US Church.

In July 2006, Sr. Kate returned to Detroit and established a nonprofit organization, Intercultural Consultation Services (ICS). She “retired” in 2016 but continues as an independent contractor to mentor others in cultural diversity and skills for intercultural living, both nationally and internationally.

## **SHIRLEY A. LISS '66**

After graduating from Marygrove College in 1966 with a degree in mathematics, Shirley A. Liss continued her studies at the University of Maryland before taking a computer programming position with IBM. In this role, Shirley worked with the company's corporate headquarters as well as the National Aeronautics and Space Administration (NASA), the United States Department of Veteran's Affairs (VA), and others.



In 1970, without a job or definitive plan, Shirley packed her bags and moved to Fairbanks, Alaska. Here, she took up residence in a 225 square foot log cabin before signing on as a computer programmer for the Aurora Studies Group at the Geophysical Institute. She also continued her studies in geophysics before initiating a two decade-long career as a geologist with the Alaska Geological Survey.

At 44 years old, Shirley decided it was time for another move—this time from her humble cabin into a “real house.” So she installed solar panels to power her tools and got to work. Considering that Shirley's life has always embodied the pioneer spirit, it should come as no surprise that her home would be the first in Fairbanks to completely rely on solar energy. She moved into her new home at 50 years old, connected to the power grid at 60, and finally gave herself the gift of plumbing at 70.

Throughout the years, Shirley continued to research and place work in over 80 publications, volunteer, and still find the time and energy to challenge herself and help others. She has kayaked through class four whitewater Nenana Canyon, been dropped into the Alaskan wilderness by chopper, and helped clear every recreational dog mushing and ski trail in her local Goldstream Valley. A skilled “musher” in her own right, Shirley has run the one thousand mile Yukon Quest dog sled race and holds the distinction of being the first woman to run the race in both directions.

These days, she takes classes and teaches for the Osher Life Long Learning Program. Additionally, Shirley works with the American Association of University Women, the Fairbanks Land Trust, Fairbanks Paddlers, Pioneer's Home, and Rock Club. She's also been known to harass local politicians.





### MARGUERITE WILLIAMS-HARRIS '03

Marguerite's introduction to teaching came first at church when she took over Sunday school duties. At this early stage, she felt compelled to do more when she saw her students struggling to digest the Bible class material. So she went to the library, devoured all of the research on struggling readers that she could find, and began to implement what she learned into her Sunday school classes. "Those lessons revealed a natural gift I never knew I had: teaching those who struggle," she says.



Her first paid teaching job was a long-term, second grade substitute position in the Flint Community School System. "From there," she says, "I was smitten." After earning a degree in communications and a stint with the Chicago Tribune, Marguerite still felt the tug to teach. So she taught vacation Bible school, and tutored anyone who was struggling and willing to learn from her, all while pursuing a second bachelor's degree in human services.

In 2001, she began work on her MAT degree from Marygrove College. To put her newly-acquired knowledge to the test, she accepted a challenge even she wasn't entirely sure she was up to: working with a State Offender Recidivism Reduction Program, teaching reading and reading comprehension to inmates. Marguerite held this position until 2003, when she graduated from Marygrove. Marguerite then took a teaching position where she taught fifth grade for five years until the school closed.

Interested in diversifying her teaching experience, Marguerite traveled overseas to gain first-hand knowledge of other education systems. This experience led to Marguerite accepting a part-time position working online with ESL students, ages 5 and 6, from China, France, Germany, and Spain.

Marguerite has taught elementary, middle school and adult students. She served as mentor coach for Genesee County Head Start Programs, has a decade of experience as a behavioral specialist, and continues to teach Sunday school. Marguerite states that she has been very fortunate to be able to work in a field as diverse and exhilarating as education and she hopes to continue growing in education for many years to come.

### MONIQUE STANTON '11

Monique earned her Master of Arts in Social Justice from Marygrove in 2011, but her "commitment to the task of building a more just and humane world" has always guided her personal and professional decisions, says friend and colleague Susan Styf. Consider, for example, Monique's work with Jesuit Volunteer Corps (JVC), a non-profit that recruits recent university grads using the tagline, "Give us an intense year, and we'll give you a sense of purpose to guide every year that follows."



"It was definitely intensive," Monique says, reflecting on the year she spent in Portland, Oregon, providing education, organizing cultural outings, and facilitating social service connections on behalf of at-risk and homeless youths. "But it was also life-changing. It made me realize that everything we do, every decision we make, has an impact on the larger world."

Following her year of service with JVC, Monique joined CARE of Southeastern Michigan in 2005, serving the non-profit's Family to Family Program as a community specialist, a role in which she tackled welfare reform by providing resources and support for families in the child welfare system.

Taking a short "reprieve" from her work with CARE, she joined Leaps and Bounds Family Services where she assisted in opening the Shurly Family Learning Center. In 2008, she was again recruited by CARE, this time to fill the role of deputy director. In 2012, CARE named Monique president and chief executive officer.

In the last year alone, CARE, which has been providing substance abuse treatment and resources in Southeast Michigan since 1977, has more than tripled its workforce, growing from 30 to 112 employees. Also worth mentioning is the fact that Monique helped increase the organizational budget from \$2.8 million in 2016 to \$4.7 million in fiscal 2018.

In addition to her work with CARE, Monique is an active member of a variety of local coalitions and task forces, and is a 2013 Business Magazine 30 in Their Thirties honoree. In 2014, the Detroit Free Press and Metropolitan Affairs Coalition awarded Monique the Shining Light Dave Bing Future Leader Award for her regional advocacy addressing substance abuse disorders.

# ALUMNI PROFILE:



## Meet Alberta Elder '43

It's safe to say that Alberta Elder has seen a thing or two in her 97 years. Born in 1921, only one year after women obtained the right to vote, she's seen seventeen presidents elected, witnessed prohibition, and still clearly recalls the newsboys' declaration that Lindbergh had safely landed in Paris. Lest we forget our history lessons, Alberta is there to remind us. She was also there for Black Thursday, World War II and the end of the Great Depression, the Cold War, Elvis, Beatlemania, Korea and Vietnam, the Civil Rights Movement, and everything after and in between. Quite a life, indeed.

Nearly a century into her journey, Alberta thought it about time to commit her story to paper. The inspiration, she says, came after a couple of gentle nudges from her nieces Dale and Pat. "Years ago, I happened to make an off-handed comment about how she should get her memoir down," says Dale. "But I never thought she'd take my idea by the horns and actually do it!" Pat says something similar. "I didn't have any notion that we were in any way inspiring to the project." What she does recall, and quite fondly, is a chance reunion she had with Dale and Alberta. "It had been many years since we'd all been together in the same place, so of course we got to talking about the old days. Maybe it was the act of us remembering aloud together that inspired Alberta," she says.

Thinking she'd record an oral history of her life, Alberta started by sorting through her collection of family photos. But the images unleashed a floodgate of memories and before she knew it, she was writing a book. The result is entitled *The Journey that Began in Detroit*, a 296-page memoir that she's currently readying for press.

As the title suggests, Alberta's story begins in Detroit, a city that isn't so much a backdrop for her memoir as it is a supporting character, a spirit, an impetus, whose very presence made obstacles appear to melt away. "Detroit had a vibrancy and energy—anything seemed possible," she says, recalling an image of the neighborhood boys working on their Model T's in the alleyways. "It never occurred to them that perhaps they couldn't fix them. They knew it was simply a matter of figuring out how."

Alberta grew up with her half-brothers Arthur, Howard, and Paul. Her father Albert, a widower, had lost his first wife to Spanish influenza and was left to raise the three boys alone. He remarried Helen Marie Reeber, who gave birth to Alberta in 1921. Life in Detroit was as beautiful as it was exciting. "All the streets were lined with big trees. The branches of huge maples and elms almost closed off the sky," Alberta remembers. And if she couldn't find inspiration in the setting, she surely found it at home and in the company her father kept.

Her father, a friend and schoolmate of Henry Ford, quit school at fourteen. "He didn't like the teacher, so he, right along with Henry, walked out and quit," she laughs. At first he helped his father deliver milk, but within the year Alberta, still only fourteen, went into business for himself, first supplying oil and later transitioning into the lumber and coal supply business.

Time, history, and retrospectives are not always kind to fallible geniuses, but Alberta, whose father remained close with Ford throughout the years, is quick to note the man's generosity. "Once, the wife of one of the teamsters who worked for my father became ill," she says "Dad worried because no one could discover what was wrong." So he turned to his old pal Henry, who admitted the woman to his hospital. The woman recovered and was never billed for the treatment.

Alberta went to grade school at St. Agnes, then St. Mary Academy in Monroe, before moving on to Marygrove College where she took a pre-medicine track of study, carrying 18 credit hours straight through. Following graduation in 1943, with the world still at war, Alberta was recruited by a research division of General Motors to conduct chemical analysis for the war effort. "I felt like I was out of my league," she says, "but I was happy I'd learned to do analysis to the fourth decimal place—they only needed me to do it to three decimal places!" Why she and her colleagues were analyzing metal she'll never know, though she suspects that it had something to do with galvanizing military aircraft materials.

In 1944, she married her first husband, James, and for the next 25 years, they zigzagged the country like "corporate gypsies," she says. James worked for the industrial division of Scott Paper, which took the couple from New York to New Jersey to Michigan to California. "We were always moving," she recalls. "No sooner would we buy a home then we'd resell it. We'd get about two days' notice and then we were off again."

After divorcing, Alberta married Crawford Elder in 1971. Since then, a lot has happened. Alberta has served on the board of the League of Women Voters and was the first woman president of a new parish that combined the congregations of Saint Hugo of the Hills in Bloomfield Hills and Holy Name in Birmingham, Michigan. She also put in two decades of service with Blue Shield where she moved through the ranks, starting as a complaints and appeals representative and eventually becoming a hearing officer.

Now in New Hampshire, Alberta is enjoying the process of looking back, immersing herself in a world of family photos, genealogical trees, newspaper clippings, and the 296-page manuscript that she's proofing for "what seems the umpteenth time." For Alberta, the project is worth every drop of sweat though. "I wanted to give my nieces and nephews a glimpse into the lives of their grandparents...they didn't know my dad's story because he was bedridden during his final years; they didn't know his active life. I want them to know what it meant, what it was like to grow up in a city like Detroit."

*Alberta's graduation photo;  
Alberta, her father, mother  
and brother Howard.*



## LEARN BALLROOM, CHA-CHA AND MORE



Do you enjoy Dancing with the Stars? Why not put yourself in the picture?

Ballroom Dancing has made a comeback and here is your chance to learn this elegant and graceful art form. The Marygrove College Alumni Program Committee is once again offering nine 90-minute lessons followed by a dance where you can show off your newly acquired or finely honed skills.

Eldon Brown, a certified Master Instructor, will join Margo Lee '00, to share their love for dance. With these experienced instructors, you'll be ready to 'Dance with the Stars' in no time! In addition to being fun, Ballroom Dancing is very healthy, as it has wonderful physical, mental, and social benefits.

Register on your own or with a partner. Make sure that you wear shoes with leather soles. If purchased individually, lessons are \$8.00 for Alumni and current grad students, \$5.00 for high school and undergraduate students with ID. Alumni, you can enjoy big savings when you purchase all nine lessons in advance for just \$50.00.

AND, a limited number of scholarships for lessons and the final dance are available for current Marygrove students – call today!

### Day & Dates:

Thursdays:  
February 7, 14, 21, 28, 2019  
March 7, 14, 21, 28, 2019  
April 4, 2019

All classes will be held in Alumnae Hall in the Madame Cadillac Building dance from 6 to 7:30 p.m.

The Final Dance will be Saturday, April 13, 2019. Advance tickets \$20.00. Deadline to purchase dance tickets is April 1, 2019. NO TICKETS WILL BE SOLD AT THE DOOR.

All tickets purchased by March 26, 2019, will be entered into a drawing to win great prizes.

Proceeds from Ballroom Lessons and Dance benefit the Jan Soleau, IHM Student Support Fund. To register for the lessons, purchase tickets for the Final Dance or for more information, contact Margo Lee '00 at (313) 402-7776 or margolee2000@gmail.com or Dennis Howie, vice president for Institutional Advancement, at (313) 927-1451



ONLINE

MICRO-CREDENTIAL IN POLITICAL CHANGE

CAREER OPPORTUNITIES

- Non-profit Management
- Politics and Government Affairs
- Public Interest Advocacy
- Public Interest Law
- International or Multicultural Affairs
- Diversity & Social Justice Consultation
- Corporate Giving
- Media
- Public Affairs
- Human Services

FOR INFORMATION CONTACT

Brenda Bryant, PhD  
Assistant Professor and Social Justice Program Director  
bbryant@marygrove.edu  
(313) 927-1502

FEATURES OF THE PROGRAM

For those interested in systemic change, we offer a seven-credit Micro-credential in Political Change\* that investigates the practices of social change with a political focus. You will learn how to influence the political system, and have a chance to examine your values within the context of social justice and your religious beliefs.

SPECIFIC PROGRAM INFORMATION

Campaigns and Elections explores the major facets of US elections, such as voter turnout, lobbying, the role of media and money, and the potential for reform. Organizing for Social Change focuses on theories and fundamental strategies and skills for community organizing and change. Strategies for Social Change introduces strategies to help implement change, particularly within

CURRICULUM (7 Credit Hours)

**SJ 510 Campaigns and Elections (2)**  
SJ 510 Campaigns and Elections is an exploration of major facets of US political campaigns and elections, including voter turnout and choice, grassroots activity, lobbying, and the role of money



ONLINE

MICRO-CREDENTIAL IN INSTRUCTIONAL DESIGN & ONLINE COURSE DEVELOPMENT

CAREER OPPORTUNITIES

- Possible Careers/Career Opportunities: School or District Technology Staff, Public and private school teachers and other professionals with high level of technology integration

FOR INFORMATION CONTACT

Chenfeng Zhang, PhD  
Associate Professor and Educational Technology Program Director  
czhang@marygrove.edu  
(313) 927-1381

FEATURES OF THE PROGRAM

This Instructional design and Online Course Development Micro-credential\* provides school teachers and other professionals with the understanding of the concepts, processes and practices of instructional design systems for educational technology. Students will apply the instructional design models for the development of instructional materials for both face-to-face and online settings. Online pedagogy, assessment, collaboration and management strategies and best practices will also be addressed.

SPECIFIC PROGRAM INFORMATION

This micro-credential will service public and private school teachers who wish to gain more knowledge and expertise in instructional design and online course design. It will also serve

CURRICULUM

This 6-credit micro-credential consists of two courses: EDT613 Applied Instructional Technology and EDT650 Distance Learning through Technology.



ONLINE

MICRO-CREDENTIAL IN GOOGLE APPLICATIONS AND MULTIMEDIA INTEGRATION

CAREER OPPORTUNITIES

- School or District Technology Staff, Public and private school teachers and other professionals with high level of technology integration

FOR INFORMATION CONTACT

Chenfeng Zhang, PhD  
Associate Professor and Educational Technology Program Director  
czhang@marygrove.edu  
(313) 927-1381

FEATURES OF THE PROGRAM

This Google Applications and Multimedia Integration Micro-credential\* provides school teachers and other professionals with the knowledge and expertise of using Google Applications and advanced features for multimedia integration and development. Students will gain expertise for using and integrating Google Applications in educational and other settings. Multimedia instructional materials integration and development will also be addressed.

SPECIFIC PROGRAM INFORMATION

This micro-credential will serve school teachers and other professionals who wish to gain more knowledge and expertise in integration of the latest Google technologies and multimedia integration. It will also serve other professionals in the education and business fields whose jobs are related to using Google applications. Since the certificate is online, it can serve in-state and out-of-state teachers and other professionals. Getting graduate credits while being trained in Google applications is a plus over other Google trainings without graduate credits.

CURRICULUM

This 6-credit micro-credential consists of two courses: EDT603 Computer Application for Educators and EDT623 Multimedia Integration for Educators.

**EDT 603 Computer Application for Educators**  
This course addresses the selection and implementation of educational software packages and utilization of Internet resources in the classroom. Involves students development of computer generated instructional materials for the classroom and other educational settings.

**EDT 623 Multimedia Integration for Educators**  
This course addresses the selection and integration of multimedia applications and utilization of Internet multimedia tools in the classroom. Students are involved in development and integration of multimedia instructional materials for instruction.

ADMISSION REQUIREMENTS

- Submit a graduate application
- Send official transcripts for the bachelor degree-awarding institution directly to Marygrove College: Office of Admissions
- Have a minimum 3.0 grade point average

\*Pending DOE approval

August 2018

# MARYGROVE TO ADD LEADING-EDGE ACADEMIC PROGRAMS

Awaiting Department of Education approval are five new academic programs that will set Marygrove apart from the competition! Anticipating market demand, Marygrove has created two micro-credentials in Educational Technology and one in Social Justice as well as two new certificates in Education.

The micro-credential is a “leading-edge” concept in advanced education. A micro-credential is a certification indicating demonstrated competency in a specific skill. Generally, micro-credentials are also on-demand, shareable, and personalized. Learners have voice and choice in what credentials they want to pursue and can create their own education playlists. The Marygrove micro-credential is “stackable,” whose credits will count toward the Master of Education in Educational Technology or the Master of Arts in Social Justice.

Google Applications and Multimedia Integration and Instructional Design & Online Course Development are our two Educational Technology micro-credentials and Political Change is our Social Justice micro-credential.

Marygrove has created two new Education certificate programs: Science, Technology, Engineering & Mathematics (3-5) and Reading Leading to The Michigan Reading Specialist Endorsement. NGSS not only includes new Science, Technology, Engineering and Mathematics (STEM) content but also new pedagogy and new exploratory-based teaching techniques. Many teachers find that they have a gap in their own skills to effectively teach to the new standards. Therefore, there is an urgent need for new teacher preparation and professional development in the STEM area. Indeed, this certificate provides a more effective, exciting and integrated way of teaching science.

The Certificate in Reading Leading to the Michigan Reading Specialist Endorsement (BR) is designed for those who have already graduated from Marygrove College’s Master in the Art of Teaching degree with a Focus on Reading and Literacy. Both certificates are also “stackable.”

Dr. Jacqueline El-Sayed, vice president for academic affairs, said, “We’ve not seen these types of certificates and micro-credentials yet offered in graduate schools so we’re pleased to bring them to the market. These, we believe, will continue Marygrove legacy of innovative academic programs.”





# Thank You So Much!

Donor Recognition

Recognizing the contributions of those who support Marygrove and its mission is among the most important things we can do. Because of you, we have been able to design new academic programs, create new scholarships and ensure student success.

The Donor Honor Roll acknowledges gifts to the college in the 2017-2018 fiscal year ending June 30. The Donor Honor Roll is also our way of publicly saying thank you!

## FOUNDERS SOCIETY - (\$100,000.00 + )

†Paul Waickman

## THERESA MAXIS SOCIETY - (\$50,000 + )

Elizabeth Burns '72, MD, MA

Nancy McDonough Geschke '64

†Patricia Fleming Donaldson '51

Sisters, Servants of the Immaculate Heart of Mary

## DR. DERRY SOCIETY - (\$10,000 +)

Mareda Witte Babcock '47

Silicon Valley Community Foundation

Kathryn Benesh

The Fred A. & Barbara M. Erb Family Foundation

Judith Moore Berch '66

†Mary Jean Bolger Flood '48

Joyce Brazina Urbanic '67

Patricia Hilbert Jacoby '53

## SISTER HONORA SOCIETY - (\$5,000 +)

Diane DeFrancis

Ann Avery Miley '66

†Delphine Goetz Hetes '53

Nelson Family Trust

Michigan Roundtable for Diversity and Inclusion

Suzanne Boivin Sommerville '62

## SISTER MARY EMIL SOCIETY - (\$2,500 +)

Carrie E. Smith Schuyler Estate Trust

†Mary Jo Rowland MacDonald '50

Ann Marie Markey Samyn '51

John Cavanaugh, PhD

Sheila McAlinden '53

Sojourner Foundation

†Jane Brinkerhoff Delahanty '42

Michigan Council for the Arts and Cultural Affairs

†Margaret Sullivan '58

James and Lynelle Holden Fund

Elizabeth Fischer Richards '64

## MADAME CADILLAC SOCIETY - (\$1,000 +)

|                                       |                               |  |                                 |
|---------------------------------------|-------------------------------|--|---------------------------------|
| Marylalice Abowd Abood '61            | Rose Dohany '58               | Mary Moore Hubbell '56                 | Glenda Price, PhD               |
| Avis Ford, Incorporated               | Susan Konczal Donovan '70     | International Women's Forum - Michigan | Susan Schmidtchen Redge, MD '93 |
| Alfred Binford                        | Germaine Dorr '50             | Lorry Ashe Kempf '67                   | †Marie Baumann Richards '49     |
| Rosemary DeLaurentiis Blaszkiwicz '62 | William Doyle                 | Yvonne Lawrence Larabell '64           | Patricia Brooks Robinson '65    |
| Pamela Morey Bourgeois '67            | Mary Lou Wasmer Durkin '58    | Carol Litka '72                        | Carolyn Speer Scott '67         |
| Patricia Newman Brasseur '73          | Estate of Vera C. Wolfe       | Mary Hansknecht Massaron '82           | Virginia Burdick Skinner '67    |
| Helen Jo Cline Brenner '66            | Barbara Kent Freeman, PhD '63 | Priscilla Meneely McKulka '67          | Anne Manofsky Swartwood '67     |
| †Genevieve Lombard Burns '48          | †Elaine Borowski Freeman '49  | MGM Grand Detroit                      | Jesse Venegas                   |
| Eileen Simko Chwalibog '67            | Monique Paul Garrity, PhD '63 | Michigan First Credit Union            | Yesenia Lara Romero Venegas '07 |
| Mary Connolly '67                     | Mary Mills Gearty '64         | Joanne Zarzour Navin '63               | Joan Margaret Whittingham '63   |
| Lana Cavalier Cowell '64              | Jane Hammang-Buhl '68         | Ogletree Deakins                       | Evelyn Horen Winkels '67        |
| Mary Jane Ward Daley '67              | Jo Ann Steger Hoffman '64     | Linda Parker, JD                       | Carol Wischmeyer '65            |
| Mary Lou Latowski David '67           | Florence Marwin Hogan '66     | Vicki Parker '88                       | Patricia Anne Ford Wozniak '53  |
| Dickinson Wright, PLLC                | Margaret McInerney Holt '54   | Christopher Payne                      | Julie Hipp Yamamoto '82         |
| Kathryn Burnside Dodson '63           | Honey Bee Market La Colmena   | Plunkett and Cooney                    |                                 |
|                                       | Frances Horvath, MD '62       |  |                                 |

## GREEN AND GOLD - (\$500 +)

|                                       |                                  |                              |                                  |
|---------------------------------------|----------------------------------|------------------------------|----------------------------------|
| Renée Ahee '72                        | Detroit Public Library           | Patricia J Liesik '59        | Pamela Reed Shufro, EdD '64      |
| AMGEN Inc. Political Action Committee | Dante Malo Fuligni '57           | Jeanne Lucas Kostiuik '63    | Constance Spampinato '64         |
| Rose Fencyk Andreovich '74            | Carol Pross Gerlach '67          | Kathlynn Markel '74          | Carolyn Szumowski '64            |
| Anonymous                             | Anne Gies '68                    | Nancy Swenor Martin '64      | Barbara Brancheau Thibeault '67  |
| Joan Garbarino Boyce '67              | Karen Hammer                     | Lucy McLaughlin '72          | Louise Lewis Tsatsanifos '54     |
| Maureen Dever Brolick '70             | Gilda Caterino Heider '49        | Carmela Micallef '67         | Mary Anderson Walker '56         |
| Charles Caulk '81                     | Shirley Ostholm Hinnau, PhD '56  | Carol Peachey Mott '67       | Helen Walz-Gutowksi '62          |
| Patricia Fix Cibirka '67              | Mary Jane Johnston Hirschert '68 | Margaret Savage O'Rourke '67 | Kathleen Schmidt Weisskopf '66   |
| Patricia Clark 1967                   | Dennis Howie                     | Trudi Peters '00             | Jeanette Posler Wilson, PhD '60  |
| Esther Coleman, PhD                   | Ann Hungerman, PhD '48           | Evelyn Gault Renkert '78     | Sharon Bristol Witemeyer, MD '63 |
| Margaret Schoell Constan '48          | Virginia Godin Jakes '67         | Janet Roncelli, PhD '70      |                                  |
| Maura Corrigan '69                    | Donna Kwitt Jeziorski '63        | Catherine Drexler Ruhe '67   |                                  |
| Carol Wagner Cousineau '67            | Christine Sholander Kaiser '70   | Mary Bermel Savage '68       |                                  |
| Carol Baron Cummings '58              | Renee Bergevin Kazmierski '73    | Schwab Charitable Fund       |                                  |
| Lorraine Mousseau Decoster '67        | Julia Hartman Klein '62          | Catherine Kandrac Seyler '67 |                                  |

## TOWER CLUB - (\$250 +)

|                                |                                  |                                   |                                       |
|--------------------------------|----------------------------------|-----------------------------------|---------------------------------------|
| Eileen Adams '58               | Rose DeSloover                   | Carolynne Mauer Kubert '46        | Joanne Januszko Sawyer '66            |
| Kathleen Alessandro '72        | Marie Rychlewski DiMambro '84    | Diane Hatch Lax '67               | Jan Dreyer Scallen '70                |
| Patricia Opeka Allmen '67      | Susan Rolecki Drabant '70        | Marilyn Glauber Leslie '67        | Christine Dombrowski Shannon, PhD '67 |
| Arts Academy in the Woods      | Linda Hughes Eck '63             | Janice Machusak                   | Phyllis Bail Still '67                |
| Paulette Wyman Balich '70      | Alberta Ternes Elder '43         | Marilyn Maledon '67               | Mary Lee Petron Suchyta '67           |
| Margaret Williams Bird '64     | Steven Engel, PhD                | Denise Mallett, EdD '01           | Kathleen Tkach '84                    |
| Darcy Brandel, PhD             | Anne Fitzgerald '67              | Mary Birka McCann '50             | Winifred Kalley Tripp '67             |
| Sheila Burns '72               | Margaret Fuller '67              | Cheryl Pross Meehan '67           | Brenda Trotter '72                    |
| Arnetta Burroughs              | Mary Jane Gagnier Gelpi '53      | John Meulendyk '97                | †Alexandra Wines Turnbull '60         |
| Susan DesChenes Calfin '58     | Mary Margaret Trotter Gieske '66 | Jean Kearns Miller '70            | Julia Pawlowski Tysza '67             |
| Charlotte Porter Casanovas '67 | Marie Woodall Handley '61        | Dianna Tomas Minadeo '62          | United Way for Southeastern Michigan  |
| Mary Clement '54               | Eileen Connell Heasley '67       | Sharon O'Connor Myers '58         | Eileen Wallace '57                    |
| Janet Balawender Connolly '67  | Margaret Boyle Hendriksen '48    | Evelyn Rodak Nash '66             | Marguerite Kolinski Wescott 1967      |
| Mary Dickie Cooper '67         | Iconic Group, Inc.               | Daniel Pilon, PhD '68             | Ellen Milnar Wieting '68              |
| Barbara Merlo Delorey '63      | Donna Jurick, SND                | Miriam Mohrhoff Poirier, PhD '62  | Jill Rick Wright '68                  |
| M. Hagerty DeMare '67          | Valerie Naegeli Kloplic '63      | Frank Rashid, PhD                 |                                       |
| Margaret Garn DeMarsh ,71      | Dorothy Fifer Korwek '67         | Karen Spangenberg Ristau, EdD '62 |                                       |

## SUPPORTERS - (\$1 +)

|                               |                                 |                                |                               |
|-------------------------------|---------------------------------|--------------------------------|-------------------------------|
| Carolyn Joslin Abramovich '67 | Marguerite Lemmer Beamish '49   | Elisabeth Fazi Bohde '78       | Janet Beckman Callan '67      |
| Meryl Johnson Akers '52       | Kathleen Kendig Becker '67      | Grace Williams Bonfiglio '57   | Ellen Cameron '61             |
| Margaret Alandt, IHM '67      | Paula Micallef Bedsole '72      | Helen Allen Bradley '72        | Joyce Campbell, IHM '52       |
| Curtis Anderson               | Joan Coddington Bernhardt '00   | Rebecca Brady                  | Margaret Murawa Caram '77     |
| Elaine Zukowski Anderson '06  | Richard Berry                   | Renee Branch                   | Mary Von Hatten Carr '72      |
| Suzanne Antisdal              | Shawn Beske                     | Theresa Manda Brandstetter '54 | Patricia Lynch Cavallo        |
| Ann Dedischew Arcieri '67     | Mary Bigelow-Thom '63           | James Bridges                  | Irene Kobierski Cavanaugh '74 |
| Nancy Armstrong-Montes '71    | Vivian Binion                   | Mary Joan Broderick '01        | Virginia Nahas Chamie '69     |
| Kathleen Williams Atkins '57  | Mary Stevenson Bink '69         | Dennis Bruck '81               | Mary Sarvene Champlin '46     |
| Charles Baier '71             | Mary Koski Birnbryer '65        | Carol Loftus Brush '64         | Joan Young Chapman '64        |
| Patricia Conley Baldus '72    | Nancy Alaria Bistak '68         | Robert Bruttell                | Kathleen Ryan Chasteen '67    |
| Gloria Banks                  | Janice Ottenweller Blaising '67 | Brenda Bryant PhD              | Carla Chennault               |
| Mary Banks                    | Kathleen Skolnicki Blake '72    | K Burke. MD '71                | Anna Lee Fiely Cleary '47     |
| Mary Jean Fergus Barrett '59  | Loretta Garcia Bochenek '65     | Azilee Burkes-Ross '82         | Mary Lynn Cleveland-Evans '72 |
| Kathryn Ottinger Bartol '63   | Nancy Bogan '69                 | Leo Byoune '98                 | Judith Clink '97              |



## SUPPORTERS - (\$1 +) Continued

- |                                   |                               |                                   |                                    |
|-----------------------------------|-------------------------------|-----------------------------------|------------------------------------|
| Marcia Adamo Closson '60          | Carolina DeLuca '62           | †Claudia Koneval Friedman '59     | Kathleen Hayes-Parvin '80          |
| Patricia Coffey '67               | Christine Demkowski Pizak '68 | Theresa Futvoye-Micus '53         | Judith Heinen, PhD                 |
| William Cole                      | Elisa Centa Denja '61         | Grace Gaglio '64                  | Jane Crow Helinski '64             |
| Bernadine Kasper Coleman '70      | Jo-Ann DiPonio DePirro '63    | Molly Gale '09                    | Nancy Henk '56                     |
| Denise Coleman '00                | Catherine Fochtman DeRose '56 | Sandy Carbary Gallagher '65       | Barbara Jo Emery Hensley '70       |
| Tasha Coleman '99                 | Kathleen Perreca Detzel '71   | Alice Gallagher-McEnery '61       | M. Elizabeth Fracalanza Herbes '70 |
| Nancy Rouen Coles '54             | Katherine Haunert Devaney '67 | Joan Ringlein Garbarino, PhD '58  | Eileen Ryan Heythaler '52          |
| Sandra Jo Collins '82             | Sara Maddalena Dickerson '77  | Joan Bechard Gardy '57            | Jane Hier-Rose '57                 |
| Angela Garnetti Condon '78        | Joanne Dombrowski '68         | Nancy Gaydos '70                  | Sheila Higgins '72                 |
| Camille Pollutro Conley '67       | Maria Donofrio '73            | Frances Brodman Genet '72         | Mary Hight '09                     |
| Joann Wolski Conn '59             | Ann Mary Donofrio-Benson '70  | Virginia Weisse Gerstner '67      | Karen Beckwith Hill '67            |
| Margo Meyette Connelly '66        | Rochelle Dornatt '77          | Lois Guest Gjernes '59            | Janet Petz Hintzen '57             |
| Kathleen Holland Corbett '6       | Sheila Dorsey-Smith '86       | Judith Gold, PhD                  | Sandy Balogh Hirata '67            |
| Faye Kelly Cottrell '70           | Emma Ruth Dubuisson '71       | Emily Peltier Gordon '64          | Mary D'Huyvetter Hirsch '67        |
| Elaine Cousino '47                | Nancy Dunn '68                | Sally Grove Grady '67             | Ruby Houston '96                   |
| Rosalind Perryman Cox '93         | Mary Ann Dupuis '04           | Margaret Donaher Granzotto '48    | Mary Ann Shirk Hribar '67          |
| Deanne Martin Cranford-Wesley '97 | Vicky Czarnocki Eicher '66    | Marcia Muter Grattan '68          | Carol Hunt                         |
| Eleanor Foster Culpert '65        | Carol Eberly Ellickson '72    | Leslie Graves                     | Janet Hunt '66                     |
| Sharon McAllister Curtin '60      | Christopher Engel             | Michele LaRue Green '72           | Nancy McCartney Hunt '66           |
| Susan Toczydlowski Czapski '73    | Sandra Esparza '81            | Maria Grimminger '05              | Melanie Hwalek                     |
| Horace Dandridge                  | Barbara Ursem Evans, EdD '66  | Ann Ronan Grzeskowiak '64         | In Other Words, LLC                |
| Kathleen Kehoe Daniel '67         | Mary Jo Evans '75             | Catherine Guinan '68              | Rosemary Haunert Inch '69          |
| Margaret Dorr Darger '92          | Christine Everett '90         | Veronica Gyurina '62              | Diane Dusseau Janssens '67         |
| Gary Darke '97                    | Maureen Farrell '72           | Lynne O'Loughlin Hackathorn '67   | Nancy Jarnnoz                      |
| Julia Donovan Darlow, JD          | Kathleen Templin Fenoseff '66 | Margaret Hagerty '73              | Dianne Jennings '98                |
| Beverly Steenberg Datzl '58       | Joan Fetter '71               | Catherine Melling Haines '67      | Barbara Burke Johns '72            |
| Anne Durkee Dauerer '60           | Dexter Fields, MD             | Joanne Hajman '77                 | Rahjina Johnson '05                |
| Felicia Davis '06                 | Sheila Figman-Eule '03        | Mary Cox Haley '48                | Andrea Jones '18                   |
| Patricia Rau De Ryckere '60       | Eugene Fitzgerald '77         | Lillie Mitchell Hamilton '78      | Keith Joy '05                      |
| Valerie Deering '72               | Mary Ellen Flecksteiner '54   | Mary Katherine Hamilton, IHM '68  | Lanette Asher Kanakry '63          |
| Sharon Defever, IHM '62           | Milton Fletcher               | Phyllis Schramm Hammang '70       | Mary Jean Moran Kanya '61          |
| Jan Gilbert DeFour '72            | James Flynn                   | Jean Hank '99                     | Barbara Mc Sorley Karle '79        |
| Carletta McKenzie DeGroat '85     | Alice Fogarty '46             | Karen Goldsmith Haran '94         | Jill Kapecky Karolyi '63           |
| Julianne O'Boyle DelGiudice '60   | Nidia Abilucea Foley '62      | Mary Elizabeth Schmidt Harden '67 | Christine Kennedy, PhD '72         |
| Marie Cyril Delisi, IHM '55       | Joan Wyss Forbes '52          | Lascelles Harris '97              | Francie Kennedy '72                |
|                                   | Adrienne Fornell-Cargo '73    |                                   |                                    |



|                                 |                                      |                                 |                                      |
|---------------------------------|--------------------------------------|---------------------------------|--------------------------------------|
| Lois Kerschen '72               | Irene Murphy Lietz '74               | Lorraine McLaughlin '48         | Sue Hines O'Sullivan '65             |
| Mary Kickham-Samy, PhD          | Lucy Lee Lin '67                     | Dorothy Coots Mehringer '55     | Mary Otto '66                        |
| Suzanne Kidd-Stevenson '68      | Phyllis Lobdell '66                  | Mary Sarpolus Mellerowicz '75   | Karel Bowlus Oxley '72               |
| Martha Krupp Kimball '59        | Miriam Lalinsky Long '63             | Kathleen Gallagher Mellon '68   | Joann Kushel Ozog '65                |
| Vivian King '03                 | Elizabeth Poliuto Loria '70          | Madeleine Krakowski Mennell '65 | Joseph Pace                          |
| Dolores Kulsea Kinn '55         | Delores Love                         | Jennifer Moyle Merciez '72      | Hellen Pacely '11                    |
| M. Kathleen Kirschenheiter '68  | Cedar Wolf Lowe '94                  | Derrick Midgett '06             | Anita Page '55                       |
| Mary Jeanne Klenow '50          | Elizabeth Alfes Luck '60             | Evelyn Novotny Migda '63        | Delphine Palkowski '92               |
| Mary Lou Gougeon Knurek '58     | Mary Ann Fulkerson Luther '56        | Judith Tomlanovich Miller '61   | Roberta Granke Pall '67              |
| Ann Kohankie '61                | Celeste McKenna Lynch '72            | Linda Hayden Miller '67         | Ann Lothschuetz Parish '72           |
| Patricia Siroky Konovalov '87   | Honora Lynch '65                     | Danise Monastersky '03          | Nan Ellen Rose Passant '62           |
| Barbara Papa Konyvka '65        | Catherine Clor Lynem '73             | Jonella Mongo, PhD              | Marjorie King Patton, PhD '69        |
| Laurie LePain Kopack '05        | Willa Porter Mackey '77              | Audrey Hochstein Mooradian '50  | Amy Pavlov '08                       |
| Mary Ann Papp Kozma '61         | Mildred Eckersley Madden '67         | Katherine Moore                 | Joan Pirron Pawelak '60              |
| Rhea Butler Krolikiewicz '57    | Mary Jo VanTiem Magee '67            | Peggy Mulcrone Moravek '72      | Mary O'Sullivan Pawlak '59           |
| Margaret Dixon Kronk '68        | Gloria Tesner Maksymiuk '57          | Agnes Moroun '55                | Josephine Tyliniski Peebles '58      |
| Terry Nelson Krueger '63        | Margaret Schluchter Mannix '67       | William Moskal, EdD '72         | Priscilla Perkins                    |
| Mary Lou Cook Krutsch '58       | Jerome Manofsky                      | Sharon Moy '01                  | Patricia Perkins-Marshall '97        |
| Martha Barber Kruz '72          | Marilyn McQuillan Markey '57         | Patricia Sweeney Mueller '64    | Patricia Reilly Peters '72           |
| Sharon Kubica                   | Claire Baumann Marrone '54           | Marie Passarelli Mullen '56     | Noreen Peterson '72                  |
| Maryann Kummer '75              | Wilma Marshall '15                   | Norma Eckhardt Murphy '57       | Mary Anne Pilette '67                |
| Janet Willmott Kuras '69        | Jacqueline Martin '89                | Robert Musial                   | Rosanne Higgins Plasky '04           |
| Cathie LaBeau '97               | Virginia Bremiker Martin '56         | Linda Musko-Sullivan '71        | Lenora Piccolantonio Plott '99       |
| John LaDrigue '95               | Mary Ellen Ostrem Matras '57         | Maureen McDonald Myers '56      | Lenore Pochelski, IHM '70            |
| Ila Sarchet Lancendorfer '57    | Sharon Matthews                      | Cheryl Manofsky Nael '77        | Judy Krebsbach Polesnak '67          |
| Mary Louise Irwin Landry '65    | Cornell Mays                         | Jo Marie Nardi '47              | Peggy Posa '61                       |
| Audrey Langley '15              | Dexter Mays                          | Ellen Neff '61                  | Denise Powell, PhD                   |
| Kathleen Foxworthy Laritz '72   | Megan McBride '14                    | Shaun Nethercott                | Blanche Kolar Premo-Hopkins, PhD '67 |
| R. Toni Tassi LaRose-Gerken '65 | Patricia Dishman McCabe '58          | Ann Nett, IHM '67               | Nancy Novak Presto '72               |
| Mary Lou Femminineo LaTorre '63 | Theresa McCarthy                     | Patricia McIlvain Niehaus '52   | Helen Hoff Previts '65               |
| Roosevelt Lawrence, Jr.         | Barbara Branigan McCormack '70       | Carol Toda Obloza '60           | Esther Sobczak Prexl '67             |
| Mary Anne Zuba Lembo '68        | †Kathleen Lothamer McDermott '63     | Barbara Bigley O'Brien '55      | Susan Purrenhage                     |
| Christopher Levin '10           | Anna Mary Hrycyk McDonough, LISW '56 | Virginia McCarthy O'Hara '47    | Margaret Fallon Qualmann '42         |
| Carolyn Lewis '16               | Mary Lou Rasch McGinn '51            | Rose Marie Cooney Opyrchal '60  | Carol Quigley, IHM '63               |
| Anne Lichtenberg                | Claudia Rolling McLatcher '66        | Rebecca Warner Orłowski '60     | Gloria Reynolds Raddant ,49          |
| Ann Lieberth, PhD '67           |                                      | Robert Orvis 2000               |                                      |



# SUPPORTERS - (\$1 +)

Continued

- |                                |                                    |                                 |                                      |
|--------------------------------|------------------------------------|---------------------------------|--------------------------------------|
| Diane Rastenis '75             | Marilyn Brinkman Schneider '60     | Michael Stark                   | Annette Shetler Weber '67            |
| Susan Rastenis '72             | Christine Stawski Schomig '67      | Barbara Herrmann Start '54      | Susan Weber                          |
| Margaret McMahon Rauch '72     | Sandra LaPointe Schuette '67       | Joanna Lilly Steele '43         | Beverly Roberts Weeden '86           |
| Mary Lou Pender Reaume '60     | Julie Meehan Scott '71             | Alfred Steiner II               | Helen Hus Weil '70                   |
| Phyllis Watson Reddy '44       | Mary Wutka Scott '71               | Barbara Stewart '51             | Carol & Glenn Weisfeld               |
| Marilyn Haunert Reichardt '67  | Mary Camp Scott '90                | Carol Dietrich Stim '52         | Sally Welch, PhD                     |
| Ruth Gallagher Remus '69       | Kathryn Walsh Scrocco '58          | Lenora Lagrou Stone '47         | Kathryn Werling-Walsh, CPA, Esq. '82 |
| Madelyn Leonatti Rice '63      | Anne Marie Abel Searer '61         | Patricia Luccisano Stone '99    | Susan Orlie Wetsell '67              |
| Julia Richardson-Pate          | Gail Seidler '10                   | Anne Kearney Strand '63         | Rose Anne Czajkowski Wheeler '65     |
| Claudia Rodgers '72            | Mary Carol Bussey Sharer '65       | Elizabeth Regish Strauss '82    | Gail White                           |
| Caroline Rogers                | David Shay                         | Astella Hymes Streeby '72       | Mary Ann Wozniak White '57           |
| Lucille Muter Rogers '71       | James Shay                         | Ellen Kerbawy Suarez '68        | Kathleen Wider, PhD '66              |
| Catherine Haven Rohlman '72    | Patricia Shay                      | Eileen Sullivan '72             | Gale Prokop Widerman '67             |
| Jacqueline Rossello '67        | Jean Boigegrain Shea '52           | Kathleen Sullivan-Conlan '68    | Mary Heffernan Wilcox '71            |
| Sharon Connors Rougeau '67     | Virginia Sheehy '60                | Judy Svoboda '12                | Glenda Whitaker Williams '72         |
| Patricia Shield Rudolph '67    | Elizabeth Butler Sheppard '48      | Joanne Huseman Sycko '71        | Susan Lyons Williams '69             |
| Catherine Faulds Ruhl '68      | Barbara Gauthier Shoger '69        | Nancy Sylvester, IHM            | Theodora Williams                    |
| Joyce McGrath Ryan '44         | Joan Ludeke Sikele '67             | Dorothy Balawajder Szuba '57    | Willis Insurance Agency              |
| Thomas Ryan                    | Frances Brown Simmons '85          | Frances Ternes '77              | Addie Wilson '07                     |
| Cheryl Valley Rykwalder '72    | Georgianna Simon, CSJ, PhD '84     | Constance Thiel '63             | Rosalie Wolf '65                     |
| Eugene Saad                    | Patricia Regan Simon '51           | Catherine Malaney Timmons '89   | Loretta Woodard, PhD                 |
| Juliet Sabit                   | Sharon Rodgers Simone '67          | Eleanor Tocco '63               | Gertrude Howell Wycech '70           |
| Christine Cronin Salley '64    | Joan Fraley Simons '68             | Karen Keljo Tracy, PhD          | Mary Catherine Lowrey Wygonik '70    |
| Theresa Galvin Sands '67       | Genise Beasley Singleton '01       | Lorraine Tyler                  | Janet Yntema '68                     |
| Dorothy Durkee Sartor '63      | Carol Ratty Skruch '56             | Henry Tyszka '97                | Donald Zabriskie                     |
| Suzanne Sattler, IHM '65       | Vickie Slaughter                   | Daniel VanBelleghem             | Ann Zemke                            |
| Ernestine Saunders '72         | Betty Archie Smith '72             | Helena Castellanos Venero '68   | Richard Zwicker '02                  |
| Adam Scanlon '16               | Leslie Smith '01                   | Richard Vian                    | Dolores Zygowicz '73                 |
| Howard Schafer                 | Joan Shimko Sobczak '67            | Dursey Wade                     |                                      |
| Betty Jane Corl Schlachter '86 | Margaret Soderberg '54             | Gwendolyn Walker                |                                      |
| Anne Rogers Schlick '56        | Rose Marie Michalski Sosnowski '62 | †Sylvia Mutter Wallace '59      |                                      |
| Barbara Linahan Schmidt '47    | Margaret Gleason Spangler '53      | Patricia McGill Wallingford '90 |                                      |
| Kathryn Schmidt '73            | Joanne Stevenson Spearman '72      | Carol Dwyer Ward '59            |                                      |
| Patricia Knopes Schmidt '64    | Mary Durkin Stamm '69              | Forestina Warren, PhD '63       |                                      |
| Dee Daigler Schmitt '67        | Barbara Stanbridge IHM 1963        | Ellen Donohue Warwick '58       | †Deceased                            |

**Fully Accredited.  
Online.  
Affordable.**

**A Master's  
Degree from  
Marygrove.**

**SCHOLARSHIPS  
AVAILABLE FOR  
NEW STUDENTS.  
GET YOURS!**

Graduate Degrees and Professional  
Development So You Can Follow Your Passion

- Education + Teacher Certification
- Educational Leadership
- Educational Technology
- Human Resource Management
- Master in the Art of Teaching
- Professional Development for Teachers
- Reading Specialist
- Social Justice (on campus)
- Special Education

For over 50 years, Marygrove College has been helping students master their professional skills. See what Marygrove can do for you.

Contact Steve Coddington, (313) 927-1821 or [scodding@marygrove.edu](mailto:scodding@marygrove.edu) or visit [marygrove.edu](http://marygrove.edu).

*This is how we do it!*



GRADUATE STUDIES &  
PROFESSIONAL DEVELOPMENT

# MARYGROVE COLLEGE

8425 West McNichols Road

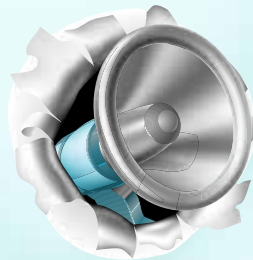
Detroit, MI 48221-2599

DIVISION OF INSTITUTIONAL ADVANCEMENT

Non-Profit  
Organization  
U.S. Postage  
**PAID**  
Permit No. 4942  
Detroit, MI



# GOT NEWS?



## WE'VE GOT GREAT NEWS ABOUT OUR MARYGROVE ALUMNI!

Have you moved, changed your phone number or e-mail address, or do you have new and exciting updates to share with us? Simply fill out the form below, scan it and e-mail it to [towertimes@marygrove.edu](mailto:towertimes@marygrove.edu) or cut it out and mail it to the Division of Institutional Advancement, Marygrove College, 8425 W. McNichols, Detroit, MI 48221.

**Mary Ann Faremouth**, class of 1979, is a motivational speaker and author of the recent Texas Authors' First Place Non-Fiction Award for her recent book, *Revolutionary Recruiting*. Living in Houston, she was also the featured speaker for annual writer's conference of the Houston Writers Guild on October 19th.

**Rachael Allen**, Rachael Thompson-Alexander when she graduated in 2006, was recently recognized as a Detroit 2020 Changemaker by WXYZ Channel 7. Rachael is operations manager for the Downtown Detroit Partnership Ambassador Program.

**Mary Jo Durivage**, class of 1971, is president of the League of Women Voters – Dearborn-Dearborn Heights. She spoke recently about the critical importance of voting in the 2018 mid-term election on US Arab Radio with host Renée Ahee, class of 1972.

### *I've Got News!*

Name \_\_\_\_\_ Class of \_\_\_\_\_

New Name? \_\_\_\_\_

Marital Status Change? \_\_\_\_\_

New Address? \_\_\_\_\_

New E-mail Address? \_\_\_\_\_

New Home Phone Number? \_\_\_\_\_ New Cell Number? \_\_\_\_\_

New Professional Title or New Occupation? \_\_\_\_\_

New Credentials? \_\_\_\_\_

Other News (Awards, Births, Deaths): \_\_\_\_\_

\_\_\_\_\_